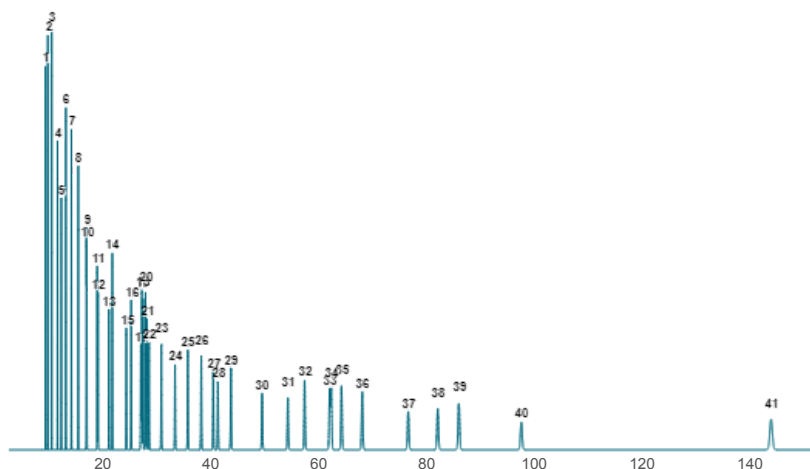


## Pro EZGC® Chromatogram Modeler

## AOCS Food FAMES and cis/trans FAMES



**Column:** Rt-2560, 100.00 m, 0.25 mm ID, 0.20 µm (cat.# 13198)

Carrier Gas: Helium, Constant Flow @ 1.00 mL/min

Average Velocity: 19.22 cm/sec

Outlet Pressure (abs): 14.70 psi (Atmospheric Pressure)

Oven Temp: 180 °C (hold 145 min)

Peaks	t <sub>R</sub> (min)	R <sub>s</sub>	Peak Width (min)	T <sub>peak</sub> (°C)
1. C4:0	9.56	5.8	0.073	180.0
2. C6:0	9.99	5.8	0.073	180.0
3. C8:0	10.71	9.6	0.075	180.0
4. C10:0	11.78	8.7	0.080	180.0
5. C11:0	12.49	8.7	0.085	180.0
6. C12:0	13.33	9.7	0.091	180.0
7. C13:0	14.35	11.2	0.099	180.0
8. C14:0	15.62	12.8	0.108	180.0
9. C14:1 (cis-9)	17.13	0.6	0.120	180.0
10. C15:0	17.20	0.6	0.120	180.0
11. C15:1 (cis-10)	19.12	1.2	0.134	180.0
12. C16:0	19.28	1.2	0.135	180.0
13. C16:1 (cis-9)	21.30	4.1	0.150	180.0
14. C17:0	21.93	4.1	0.155	180.0
15. C17:1 (cis-10)	24.53	5	0.174	180.0
16. C18:0	25.41	5	0.181	180.0
17. C18:1 (trans-6)	27.21	0.9	0.194	180.0
18. C18:1 (trans-9)	27.39	0.9	0.196	180.0
19. C18:1 (trans-11)	27.62	1.2	0.198	180.0
20. C18:1 (cis-6)	28.07	1.3	0.201	180.0
21. C18:1 (cis-9)	28.33	1.3	0.203	180.0
22. C18:1 (cis-11)	28.73	1.9	0.206	180.0
23. C18:2 (trans-9,12)	31.00	11	0.223	180.0
24. C18:2 (cis-9,12)	33.53	9.7	0.242	180.0
25. C20:0	35.90	9.5	0.259	180.0
26. C18:3 (cis-6,9,12)	38.39	7.9	0.278	180.0
27. C20:1 (cis-11)	40.60	2.9	0.294	180.0
28. C18:3 (cis-9,12,15)	41.47	2.9	0.301	180.0
29. C21:0	43.89	8	0.319	180.0
30. C20:2 (cis-11,14)	49.65	13.1	0.362	180.0
31. C22:0	54.42	7.7	0.398	180.0
32. C20:3 (cis-8,11,14)	57.52	7.7	0.421	180.0
33. C22:1 (cis-13)	62.16	0.6	0.456	180.0
34. C20:3 (cis-11,14,17)	62.44	0.6	0.458	180.0
35. C20:4 (cis-5,8,11,14)	64.35	4.1	0.472	180.0
36. C23:0	68.18	8	0.501	180.0
37. C22:2 (cis-13,16)	76.69	9.6	0.565	180.0
38. C20:5 (cis-5,8,11,14,17)	82.16	6.4	0.606	180.0
39. C24:0	86.07	6.4	0.635	180.0
40. C24:1 (cis-15)	97.63	18.1	0.722	180.0
41. C22:6 (cis-4,7,10,13,16,19)	143.86	63.8	1.068	180.0