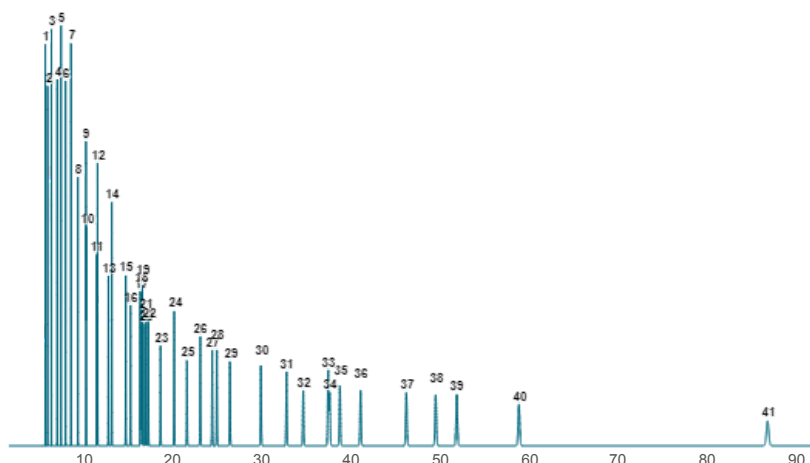


Pro EZGC® Chromatogram Modeler

AOCS Food FAMES and cis/trans FAMES



Column: Rt-2560, 100.00 m, 0.25 mm ID, 0.20 µm (cat.# 13198)

Carrier Gas: Helium, Constant Flow @ 2.50 mL/min

Average Velocity: 31.91 cm/sec

Outlet Pressure: 14.70 psi (Atmospheric Pressure)
(abs):

Oven Temp: 180 °C (hold 88 min)

Peaks	t _r (min)	R _s	Peak Width (min)	T _{peak} (°C)
1. C4:0	5.76	8.6	0.030	180.0
2. C6:0	6.02	8.6	0.030	180.0
3. C8:0	6.45	14.1	0.032	180.0
4. C10:0	7.10	11.9	0.036	180.0
5. C11:0	7.53	11.9	0.038	180.0
6. C12:0	8.03	13.1	0.042	180.0
7. C13:0	8.65	14.7	0.046	180.0
8. C14:0	9.41	16.6	0.051	180.0
9. C14:1 (cis-9)	10.32	0.7	0.057	180.0
10. C15:0	10.37	0.7	0.058	180.0
11. C15:1 (cis-10)	11.52	1.4	0.066	180.0
12. C16:0	11.62	1.4	0.066	180.0
13. C16:1 (cis-9)	12.83	5	0.075	180.0
14. C17:0	13.21	5	0.077	180.0
15. C17:1 (cis-10)	14.78	6	0.088	180.0
16. C18:0	15.31	6	0.092	180.0
17. C18:1 (trans-6)	16.39	1	0.100	180.0
18. C18:1 (trans-9)	16.50	1	0.101	180.0
19. C18:1 (trans-11)	16.64	1.4	0.102	180.0
20. C18:1 (cis-6)	16.91	1.5	0.103	180.0
21. C18:1 (cis-9)	17.07	1.5	0.105	180.0
22. C18:1 (cis-11)	17.31	2.3	0.106	180.0
23. C18:2 (trans-9,12)	18.68	12.8	0.116	180.0
24. C18:2 (cis-9,12)	20.21	11.2	0.127	180.0
25. C20:0	21.63	10.9	0.137	180.0
26. C18:3 (cis-6,9,12)	23.13	9	0.147	180.0
27. C20:1 (cis-11)	24.46	3.3	0.157	180.0
28. C18:3 (cis-9,12,15)	24.99	3.3	0.160	180.0
29. C21:0	26.45	9	0.171	180.0
30. C20:2 (cis-11,14)	29.92	14.7	0.195	180.0
31. C22:0	32.79	8.6	0.216	180.0
32. C20:3 (cis-8,11,14)	34.66	8.6	0.229	180.0
33. C22:1 (cis-13)	37.45	0.6	0.249	180.0
34. C20:3 (cis-11,14,17)	37.63	0.6	0.250	180.0
35. C20:4 (cis-5,8,11,14)	38.77	4.5	0.258	180.0
36. C23:0	41.08	8.9	0.274	180.0
37. C22:2 (cis-13,16)	46.21	10.6	0.311	180.0
38. C20:5 (cis-5,8,11,14,17)	49.50	7	0.334	180.0
39. C24:0	51.86	7	0.351	180.0
40. C24:1 (cis-15)	58.83	19.8	0.400	180.0
41. C22:6 (cis-4,7,10,13,16,19)	86.68	69.4	0.597	180.0