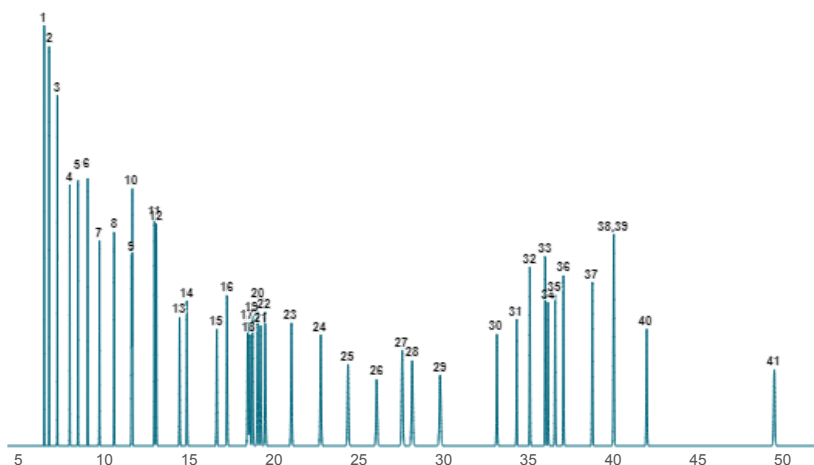


Pro EZGC® Chromatogram Modeler

AOCS Food FAMES and cis/trans FAMES



Column: Rt-2560, 100.00 m, 0.25 mm ID, 0.20 µm (cat.# 13198)

Carrier Gas: Helium, Constant Flow @ 2.00 mL/min

Average Velocity: 28.29 cm/sec

Outlet Pressure (abs): 14.70 psi (Atmospheric Pressure)

Oven Temp: 180 °C (hold 32 min) to 215 °C @ 20 °C/min (hold 17 min)

Peaks	t _R (min)	R _s	Peak Width (min)	T _{peak} (°C)
1. C4:0	6.50	8.1	0.036	180.0
2. C6:0	6.79	8.1	0.036	180.0
3. C8:0	7.27	13.6	0.038	180.0
4. C10:0	8.01	11.5	0.042	180.0
5. C11:0	8.49	11.5	0.044	180.0
6. C12:0	9.05	12.8	0.048	180.0
7. C13:0	9.75	14.5	0.052	180.0
8. C14:0	10.62	16.5	0.058	180.0
9. C14:1 (cis-9)	11.64	0.7	0.065	180.0
10. C15:0	11.69	0.7	0.065	180.0
11. C15:1 (cis-10)	12.99	1.4	0.074	180.0
12. C16:0	13.10	1.4	0.075	180.0
13. C16:1 (cis-9)	14.47	5	0.084	180.0
14. C17:0	14.90	5	0.087	180.0
15. C17:1 (cis-10)	16.66	6	0.100	180.0
16. C18:0	17.27	6	0.104	180.0
17. C18:1 (trans-6)	18.49	1	0.112	180.0
18. C18:1 (trans-9)	18.61	1	0.113	180.0
19. C18:1 (trans-11)	18.77	1.4	0.114	180.0
20. C18:1 (cis-6)	19.07	1.5	0.117	180.0
21. C18:1 (cis-9)	19.25	1.5	0.118	180.0
22. C18:1 (cis-11)	19.52	2.3	0.120	180.0
23. C18:2 (trans-9,12)	21.06	12.8	0.131	180.0
24. C18:2 (cis-9,12)	22.79	11.2	0.143	180.0
25. C20:0	24.39	10.9	0.154	180.0
26. C18:3 (cis-6,9,12)	26.08	9	0.167	180.0
27. C20:1 (cis-11)	27.59	3.3	0.177	180.0
28. C18:3 (cis-9,12,15)	28.18	3.3	0.182	180.0
29. C21:0	29.82	9	0.193	180.0
30. C20:2 (cis-11,14)	33.16	10.8	0.110	203.3
31. C22:0	34.33	9.2	0.083	215.0
32. C20:3 (cis-8,11,14)	35.11	9.2	0.089	215.0
33. C22:1 (cis-13)	36.01	1.8	0.090	215.0
34. C20:3 (cis-11,14,17)	36.17	1.8	0.094	215.0
35. C20:4 (cis-5,8,11,14)	36.59	4.5	0.096	215.0
36. C23:0	37.09	5.1	0.092	215.0
37. C22:2 (cis-13,16)	38.79	12.2	0.102	215.0
38. C20:5 (cis-5,8,11,14,17)	40.03	0.2	0.112	215.0
39. C24:0	40.06	0.2	0.104	215.0
40. C24:1 (cis-15)	41.99	18.4	0.116	215.0
41. C22:6 (cis-4,7,10,13,16,19)	49.51	64.8	0.164	215.0