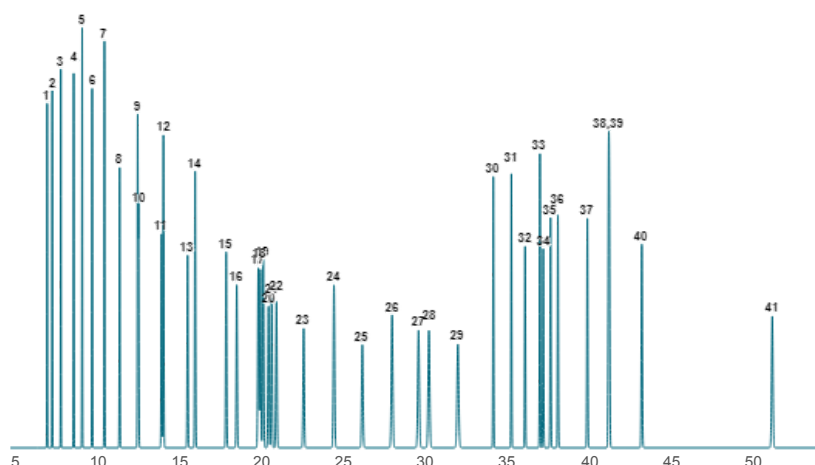


## Pro EZGC® Chromatogram Modeler

## AOCS Food FAMES and cis/trans FAMES



**Column:** Rt-2560, 100.00 m, 0.25 mm ID, 0.20 µm (cat.# 13198)  
**Carrier Gas:** Hydrogen, Constant Flow @ 1.00 mL/min  
**Average Velocity:** 26.39 cm/sec  
**Outlet Pressure (abs):** 14.70 psi (Atmospheric Pressure)  
**Oven Temp:** 180 °C (hold 32 min) to 215 °C @ 20 °C/min (hold 19 min)

| Peaks                           | t <sub>r</sub><br>(min) | R <sub>s</sub> | Peak<br>Width<br>(min) | T <sub>peak</sub><br>(°C) |
|---------------------------------|-------------------------|----------------|------------------------|---------------------------|
| 1. C4:0                         | 6.97                    | 5.5            | 0.056                  | 180.0                     |
| 2. C6:0                         | 7.28                    | 5.5            | 0.056                  | 180.0                     |
| 3. C8:0                         | 7.80                    | 9.3            | 0.058                  | 180.0                     |
| 4. C10:0                        | 8.58                    | 8.2            | 0.062                  | 180.0                     |
| 5. C11:0                        | 9.10                    | 8.2            | 0.065                  | 180.0                     |
| 6. C12:0                        | 9.71                    | 9.3            | 0.069                  | 180.0                     |
| 7. C13:0                        | 10.46                   | 10.7           | 0.074                  | 180.0                     |
| 8. C14:0                        | 11.38                   | 12.5           | 0.080                  | 180.0                     |
| 9. C14:1 (cis-9)                | 12.48                   | 0.6            | 0.088                  | 180.0                     |
| 10. C15:0                       | 12.53                   | 0.6            | 0.088                  | 180.0                     |
| 11. C15:1 (cis-10)              | 13.93                   | 1.2            | 0.098                  | 180.0                     |
| 12. C16:0                       | 14.05                   | 1.2            | 0.099                  | 180.0                     |
| 13. C16:1 (cis-9)               | 15.52                   | 4.2            | 0.109                  | 180.0                     |
| 14. C17:0                       | 15.98                   | 4.2            | 0.112                  | 180.0                     |
| 15. C17:1 (cis-10)              | 17.87                   | 5.1            | 0.126                  | 180.0                     |
| 16. C18:0                       | 18.51                   | 5.1            | 0.130                  | 180.0                     |
| 17. C18:1 (trans-6)             | 19.82                   | 0.9            | 0.140                  | 180.0                     |
| 18. C18:1 (trans-9)             | 19.95                   | 0.9            | 0.141                  | 180.0                     |
| 19. C18:1 (trans-11)            | 20.13                   | 1.2            | 0.142                  | 180.0                     |
| 20. C18:1 (cis-6)               | 20.45                   | 1.3            | 0.144                  | 180.0                     |
| 21. C18:1 (cis-9)               | 20.64                   | 1.3            | 0.145                  | 180.0                     |
| 22. C18:1 (cis-11)              | 20.93                   | 2              | 0.147                  | 180.0                     |
| 23. C18:2 (trans-9,12)          | 22.59                   | 11.2           | 0.159                  | 180.0                     |
| 24. C18:2 (cis-9,12)            | 24.43                   | 9.9            | 0.172                  | 180.0                     |
| 25. C20:0                       | 26.16                   | 9.7            | 0.185                  | 180.0                     |
| 26. C18:3 (cis-6,9,12)          | 27.97                   | 8.1            | 0.197                  | 180.0                     |
| 27. C20:1 (cis-11)              | 29.58                   | 3              | 0.209                  | 180.0                     |
| 28. C18:3 (cis-9,12,15)         | 30.21                   | 3              | 0.213                  | 180.0                     |
| 29. C21:0                       | 31.98                   | 8.2            | 0.226                  | 180.0                     |
| 30. C20:2 (cis-11,14)           | 34.13                   | 9.8            | 0.094                  | 215.0                     |
| 31. C22:0                       | 35.23                   | 8.7            | 0.096                  | 215.0                     |
| 32. C20:3 (cis-8,11,14)         | 36.07                   | 8.7            | 0.103                  | 215.0                     |
| 33. C22:1 (cis-13)              | 36.97                   | 1.9            | 0.104                  | 215.0                     |
| 34. C20:3 (cis-11,14,17)        | 37.17                   | 1.9            | 0.108                  | 215.0                     |
| 35. C20:4 (cis-5,8,11,14)       | 37.62                   | 4.1            | 0.110                  | 215.0                     |
| 36. C23:0                       | 38.07                   | 4.1            | 0.107                  | 215.0                     |
| 37. C22:2 (cis-13,16)           | 39.86                   | 10.9           | 0.118                  | 215.0                     |
| 38. C24:0                       | 41.15                   | 0.3            | 0.121                  | 215.0                     |
| 39. C20:5 (cis-5,8,11,14,17)    | 41.20                   | 0.3            | 0.128                  | 215.0                     |
| 40. C24:1 (cis-15)              | 43.17                   | 15.4           | 0.133                  | 215.0                     |
| 41. C22:6 (cis-4,7,10,13,16,19) | 51.12                   | 59.4           | 0.185                  | 215.0                     |