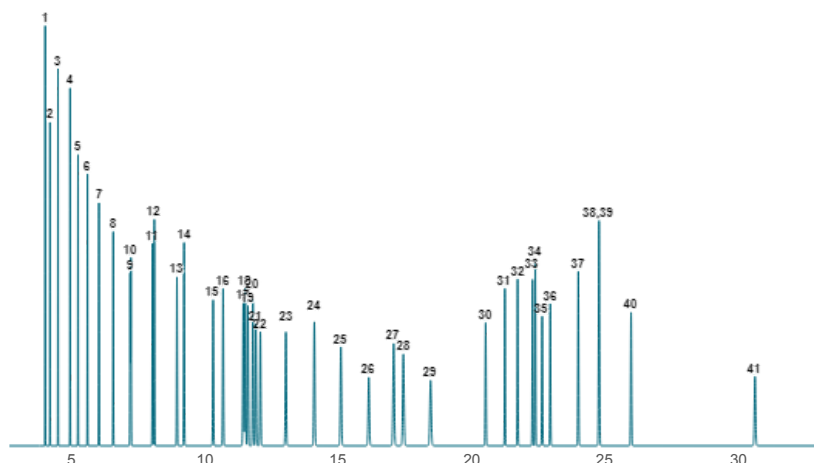


Pro EZGC® Chromatogram Modeler

AOCS Food FAMES and cis/trans FAMES



Column: Rt-2560, 100.00 m, 0.25 mm ID, 0.20 µm (cat.# 13198)
Carrier Gas: Hydrogen, Constant Flow @ 2.50 mL/min
Average Velocity: 45.70 cm/sec
Outlet Pressure (abs): 14.70 psi (Atmospheric Pressure)
Oven Temp: 180 °C (hold 19.8 min) to 215 °C @ 32.3 °C/min (hold 11 min)

Peaks	t _R (min)	R _s	Peak Width (min)	T _{peak} (°C)
1. C4:0	4.02	8.2	0.022	180.0
2. C6:0	4.20	8.2	0.022	180.0
3. C8:0	4.50	13.6	0.023	180.0
4. C10:0	4.96	11.5	0.026	180.0
5. C11:0	5.25	11.5	0.028	180.0
6. C12:0	5.61	12.8	0.030	180.0
7. C13:0	6.04	14.5	0.032	180.0
8. C14:0	6.57	16.5	0.036	180.0
9. C14:1 (cis-9)	7.21	0.7	0.040	180.0
10. C15:0	7.24	0.7	0.040	180.0
11. C15:1 (cis-10)	8.04	1.4	0.046	180.0
12. C16:0	8.11	1.4	0.046	180.0
13. C16:1 (cis-9)	8.96	5	0.052	180.0
14. C17:0	9.22	5	0.054	180.0
15. C17:1 (cis-10)	10.32	6	0.061	180.0
16. C18:0	10.69	6	0.064	180.0
17. C18:1 (trans-6)	11.44	1	0.069	180.0
18. C18:1 (trans-9)	11.52	1	0.070	180.0
19. C18:1 (trans-11)	11.62	1.4	0.070	180.0
20. C18:1 (cis-6)	11.81	1.5	0.072	180.0
21. C18:1 (cis-9)	11.92	1.5	0.072	180.0
22. C18:1 (cis-11)	12.08	2.3	0.074	180.0
23. C18:2 (trans-9,12)	13.04	12.9	0.080	180.0
24. C18:2 (cis-9,12)	14.11	11.3	0.088	180.0
25. C20:0	15.10	11	0.095	180.0
26. C18:3 (cis-6,9,12)	16.15	9	0.102	180.0
27. C20:1 (cis-11)	17.08	3.3	0.109	180.0
28. C18:3 (cis-9,12,15)	17.44	3.3	0.112	180.0
29. C21:0	18.46	9	0.119	180.0
30. C20:2 (cis-11,14)	20.52	10.8	0.067	203.4
31. C22:0	21.25	9.3	0.051	215.0
32. C20:3 (cis-8,11,14)	21.72	9.3	0.055	215.0
33. C22:1 (cis-13)	22.28	1.8	0.055	215.0
34. C20:3 (cis-11,14,17)	22.38	1.8	0.057	215.0
35. C20:4 (cis-5,8,11,14)	22.64	4.5	0.059	215.0
36. C23:0	22.95	5.1	0.057	215.0
37. C22:2 (cis-13,16)	24.00	12.2	0.063	215.0
38. C20:5 (cis-5,8,11,14,17)	24.77	0.2	0.069	215.0
39. C24:0	24.78	0.2	0.064	215.0
40. C24:1 (cis-15)	25.97	18.5	0.071	215.0
41. C22:6 (cis-4,7,10,13,16,19)	30.62	65.3	0.101	215.0