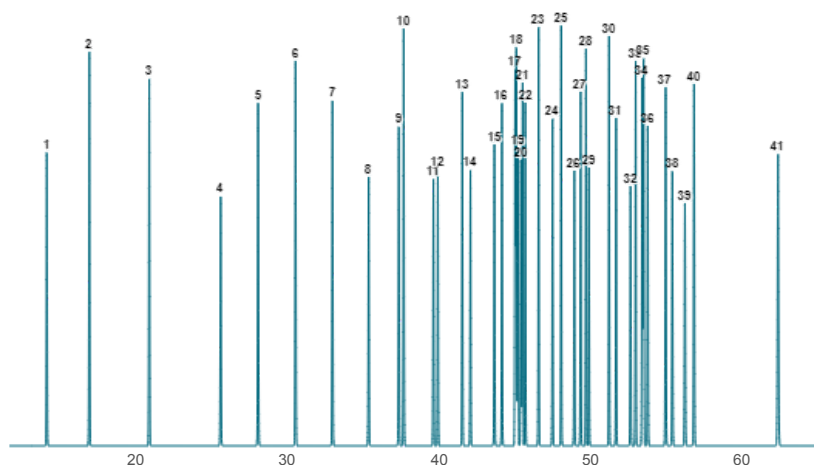


Pro EZGC® Chromatogram Modeler

AOAC 996.06 Food FAMES and cis/trans FAMES



Column: Rt-2560, 100.00 m, 0.25 mm ID, 0.20 µm (cat.# 13198)
Carrier Gas: Helium, Constant Flow @ 0.75 mL/min
Average Velocity: 15.22 cm/sec
Outlet Pressure (abs): 14.70 psi (Atmospheric Pressure)
Oven Temp: 100 °C (hold 4 min) to 240 °C @ 3 °C/min (hold 13 min)

Peaks	t _R (min)	R _s	Peak Width (min)	T _{peak} (°C)
1. C4:0	14.20	27.3	0.103	130.6
2. C6:0	17.00	27.3	0.106	139.0
3. C8:0	20.94	37	0.113	150.8
4. C10:0	25.64	21.1	0.117	164.9
5. C11:0	28.11	21.1	0.117	172.3
6. C12:0	30.57	20.9	0.116	179.7
7. C13:0	33.00	20.7	0.115	187.0
8. C14:0	35.38	17.4	0.114	194.2
9. C14:1 (cis-9)	37.37	2.8	0.114	200.1
10. C15:0	37.69	2.8	0.112	201.1
11. C15:1 (cis-10)	39.64	2.6	0.112	206.9
12. C16:0	39.94	2.6	0.111	207.8
13. C16:1 (cis-9)	41.55	4.8	0.110	212.6
14. C17:0	42.08	4.8	0.109	214.2
15. C17:1 (cis-10)	43.66	4.5	0.110	219.0
16. C18:0	44.16	4.5	0.107	220.5
17. C18:1 (trans-6)	45.02	0.7	0.108	223.1
18. C18:1 (trans-9)	45.10	0.7	0.107	223.3
19. C18:1 (trans-11)	45.21	1	0.107	223.6
20. C18:1 (cis-6)	45.41	1	0.107	224.2
21. C18:1 (cis-9)	45.52	1	0.108	224.6
22. C18:1 (cis-11)	45.69	1.6	0.107	225.1
23. C18:2 (trans-9,12)	46.57	8.1	0.107	227.7
24. C18:2 (cis-9,12)	47.49	5.3	0.107	230.5
25. C20:0	48.05	5.3	0.104	232.2
26. C18:3 (cis-6,9,12)	48.92	3.8	0.107	234.8
27. C20:1 (cis-11)	49.33	3.3	0.105	236.0
28. C18:3 (cis-9,12,15)	49.69	1.8	0.106	237.1
29. C21:0	49.88	1.8	0.102	237.6
30. C20:2 (cis-11,14)	51.20	4.4	0.105	240.0
31. C22:0	51.67	4.4	0.104	240.0
32. C20:3 (cis-8,11,14)	52.62	3.1	0.110	240.0
33. C22:1 (cis-13)	52.96	3.1	0.109	240.0
34. C20:3 (cis-11,14,17)	53.38	0.8	0.112	240.0
35. C23:0	53.48	0.8	0.109	240.0
36. C20:4 (cis-5,8,11,14)	53.75	2.4	0.114	240.0
37. C22:2 (cis-13,16)	54.93	3.8	0.117	240.0
38. C24:0	55.37	3.8	0.116	240.0
39. C20:5 (cis-5,8,11,14,17)	56.20	4.8	0.125	240.0
40. C24:1 (cis-15)	56.80	4.8	0.123	240.0
41. C22:6 (cis-4,7,10,13,16,19)	62.33	44.7	0.156	240.0