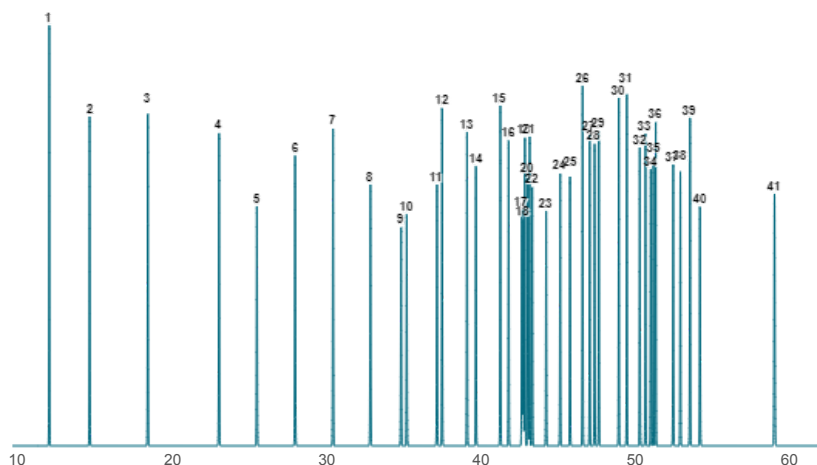


Pro EZGC® Chromatogram Modeler

AOAC 996.06 Food FAMES and cis/trans FAMES



Column: Rt-2560, 100.00 m, 0.25 mm ID, 0.20 µm (cat.# 13198)
Carrier Gas: Helium, Constant Flow @ 1.00 mL/min
Average Velocity: 18.14 cm/sec
Outlet Pressure (abs): 14.70 psi (Atmospheric Pressure)
Oven Temp: 100 °C (hold 4 min) to 240 °C @ 3 °C/min (hold 10 min)

Peaks	t _R (min)	R _S	Peak Width (min)	T _{peak} (°C)
1. C4:0	12.10	33.3	0.078	124.3
2. C6:0	14.70	33.3	0.083	132.1
3. C8:0	18.46	45.2	0.091	143.4
4. C10:0	23.07	25.6	0.096	157.2
5. C11:0	25.51	25.6	0.097	164.5
6. C12:0	27.98	25.3	0.097	171.9
7. C13:0	30.43	25.1	0.096	179.3
8. C14:0	32.85	20.7	0.096	186.5
9. C14:1 (cis-9)	34.83	3.7	0.096	192.5
10. C15:0	35.19	3.7	0.094	193.6
11. C15:1 (cis-10)	37.15	3.4	0.094	199.4
12. C16:0	37.48	3.4	0.092	200.4
13. C16:1 (cis-9)	39.09	6.1	0.093	205.3
14. C17:0	39.66	6.1	0.092	207.0
15. C17:1 (cis-10)	41.24	5.9	0.091	211.7
16. C18:0	41.78	5.9	0.090	213.3
17. C18:1 (trans-6)	42.63	1	0.090	215.9
18. C18:1 (trans-9)	42.72	1	0.090	216.2
19. C18:1 (trans-11)	42.83	1.1	0.091	216.5
20. C18:1 (cis-6)	43.02	1.3	0.091	217.1
21. C18:1 (cis-9)	43.13	1.3	0.090	217.4
22. C18:1 (cis-11)	43.30	1.8	0.091	217.9
23. C18:2 (trans-9,12)	44.20	9.8	0.090	220.6
24. C18:2 (cis-9,12)	45.11	6.9	0.091	223.3
25. C20:0	45.74	6.9	0.087	225.2
26. C18:3 (cis-6,9,12)	46.55	5.1	0.089	227.7
27. C20:1 (cis-11)	47.01	3.6	0.088	229.0
28. C18:3 (cis-9,12,15)	47.33	3.1	0.089	230.0
29. C21:0	47.61	3.1	0.086	230.8
30. C20:2 (cis-11,14)	48.90	5.9	0.087	234.7
31. C22:0	49.41	5.9	0.084	236.2
32. C20:3 (cis-8,11,14)	50.25	4.2	0.087	238.8
33. C22:1 (cis-13)	50.62	3.9	0.085	239.8
34. C20:3 (cis-11,14,17)	50.96	1.9	0.087	240.0
35. C23:0	51.13	1.7	0.084	240.0
36. C20:4 (cis-5,8,11,14)	51.28	1.7	0.089	240.0
37. C22:2 (cis-13,16)	52.41	5.1	0.090	240.0
38. C24:0	52.87	5.1	0.090	240.0
39. C20:5 (cis-5,8,11,14,17)	53.50	6.5	0.097	240.0
40. C24:1 (cis-15)	54.14	6.5	0.096	240.0
41. C22:6 (cis-4,7,10,13,16,19)	58.96	50.3	0.122	240.0



Restek Corporation, U.S., 110 Benner Circle, Bellefonte, PA 16823

Copyright © 2018 Restek Corporation. All rights reserved.



A Company of Owners

