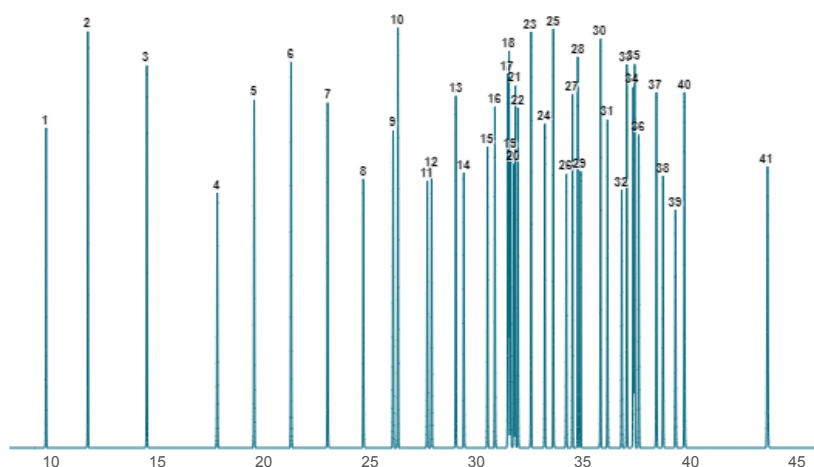


Pro EZGC® Chromatogram Modeler

AOAC 996.06 Food FAMES and cis/trans FAMES



Column: Rt-2560, 100.00 m, 0.25 mm ID, 0.20 µm (cat.# 13198)
Carrier Gas: Helium, Constant Flow @ 1.40 mL/min
Average Velocity: 22.09 cm/sec
Outlet Pressure (abs): 14.70 psi (Atmospheric Pressure)
Oven Temp: 100 °C (hold 2.8 min) to 240 °C @ 4.3 °C/min (hold 10 min)

Peaks	t _r (min)	R _s	Peak Width (min)	T _{peak} (°C)
1. C4:0	9.82	35.6	0.055	130.2
2. C6:0	11.77	35.6	0.058	138.6
3. C8:0	14.53	47.2	0.063	150.4
4. C10:0	17.83	25.9	0.067	164.6
5. C11:0	19.56	25.8	0.067	172.1
6. C12:0	21.29	25.4	0.067	179.5
7. C13:0	23.00	25	0.067	186.9
8. C14:0	24.68	21	0.067	194.1
9. C14:1 (cis-9)	26.07	3.4	0.067	200.1
10. C15:0	26.30	3.4	0.065	201.0
11. C15:1 (cis-10)	27.67	3.1	0.065	206.9
12. C16:0	27.88	3.1	0.065	207.8
13. C16:1 (cis-9)	29.00	5.8	0.064	212.7
14. C17:0	29.38	5.8	0.064	214.3
15. C17:1 (cis-10)	30.49	5.4	0.064	219.1
16. C18:0	30.84	5.4	0.063	220.6
17. C18:1 (trans-6)	31.45	0.8	0.063	223.2
18. C18:1 (trans-9)	31.50	0.8	0.062	223.4
19. C18:1 (trans-11)	31.58	1.2	0.063	223.7
20. C18:1 (cis-6)	31.72	1.2	0.063	224.3
21. C18:1 (cis-9)	31.80	1.2	0.063	224.7
22. C18:1 (cis-11)	31.92	1.9	0.063	225.2
23. C18:2 (trans-9,12)	32.53	9.8	0.063	227.8
24. C18:2 (cis-9,12)	33.17	6.3	0.063	230.6
25. C20:0	33.57	6.3	0.061	232.3
26. C18:3 (cis-6,9,12)	34.18	4.6	0.063	234.9
27. C20:1 (cis-11)	34.47	4	0.061	236.2
28. C18:3 (cis-9,12,15)	34.72	2.2	0.063	237.3
29. C21:0	34.85	2.2	0.060	237.8
30. C20:2 (cis-11,14)	35.78	5.3	0.061	240.0
31. C22:0	36.11	5.3	0.061	240.0
32. C20:3 (cis-8,11,14)	36.78	3.6	0.065	240.0
33. C22:1 (cis-13)	37.02	3.6	0.064	240.0
34. C20:3 (cis-11,14,17)	37.32	0.9	0.067	240.0
35. C23:0	37.38	0.9	0.064	240.0
36. C20:4 (cis-5,8,11,14)	37.58	2.9	0.068	240.0
37. C22:2 (cis-13,16)	38.40	4.5	0.069	240.0
38. C24:0	38.71	4.5	0.068	240.0
39. C20:5 (cis-5,8,11,14,17)	39.30	5.6	0.074	240.0
40. C24:1 (cis-15)	39.72	5.6	0.073	240.0
41. C22:6 (cis-4,7,10,13,16,19)	43.60	53.1	0.094	240.0