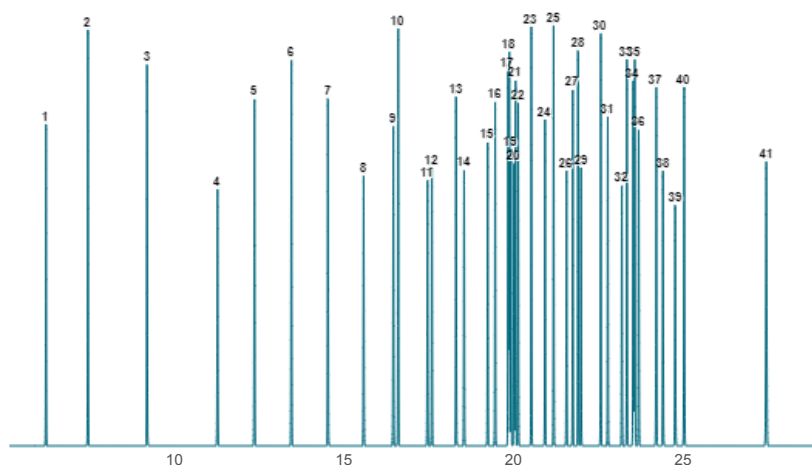


Pro EZGC® Chromatogram Modeler

AOAC 996.06 Food FAMES and cis/trans FAMES



Column: Rt-2560, 100.00 m, 0.25 mm ID, 0.20 µm (cat.# 13198)
Carrier Gas: Hydrogen, Constant Flow @ 1.75 mL/min
Average Velocity: 34.87 cm/sec
Outlet Pressure (abs): 14.70 psi (Atmospheric Pressure)
Oven Temp: 100 °C (hold 1.8 min) to 240 °C @ 6.8 °C/min (hold 7 min)

Peaks	t _R (min)	R _S	Peak Width (min)	T _{peak} (°C)
1. C4:0	6.21	36	0.034	130.0
2. C6:0	7.45	36	0.037	138.4
3. C8:0	9.19	47.5	0.040	150.2
4. C10:0	11.27	26.1	0.042	164.4
5. C11:0	12.36	25.8	0.042	171.8
6. C12:0	13.45	25.4	0.042	179.2
7. C13:0	14.52	25.2	0.042	186.5
8. C14:0	15.58	21.1	0.042	193.7
9. C14:1 (cis-9)	16.45	3.4	0.042	199.7
10. C15:0	16.60	3.4	0.041	200.6
11. C15:1 (cis-10)	17.46	3.1	0.041	206.5
12. C16:0	17.59	3.1	0.040	207.4
13. C16:1 (cis-9)	18.30	5.8	0.041	212.2
14. C17:0	18.54	5.8	0.040	213.8
15. C17:1 (cis-10)	19.24	5.5	0.040	218.6
16. C18:0	19.46	5.5	0.039	220.1
17. C18:1 (trans-6)	19.84	0.9	0.039	222.7
18. C18:1 (trans-9)	19.88	0.9	0.039	222.9
19. C18:1 (trans-11)	19.92	1.2	0.039	223.2
20. C18:1 (cis-6)	20.01	1.2	0.040	223.8
21. C18:1 (cis-9)	20.06	1.2	0.039	224.2
22. C18:1 (cis-11)	20.14	1.9	0.039	224.7
23. C18:2 (trans-9,12)	20.52	9.9	0.039	227.3
24. C18:2 (cis-9,12)	20.93	6.4	0.039	230.1
25. C20:0	21.18	6.4	0.038	231.8
26. C18:3 (cis-6,9,12)	21.56	4.7	0.039	234.4
27. C20:1 (cis-11)	21.75	4	0.038	235.6
28. C18:3 (cis-9,12,15)	21.90	2.2	0.039	236.7
29. C21:0	21.99	2.2	0.037	237.3
30. C20:2 (cis-11,14)	22.57	5.4	0.038	240.0
31. C22:0	22.78	5.4	0.038	240.0
32. C20:3 (cis-8,11,14)	23.20	3.7	0.040	240.0
33. C22:1 (cis-13)	23.34	3.7	0.040	240.0
34. C20:3 (cis-11,14,17)	23.53	1	0.041	240.0
35. C23:0	23.57	1	0.040	240.0
36. C20:4 (cis-5,8,11,14)	23.69	2.9	0.042	240.0
37. C22:2 (cis-13,16)	24.21	4.5	0.043	240.0
38. C24:0	24.41	4.5	0.042	240.0
39. C20:5 (cis-5,8,11,14,17)	24.77	5.7	0.046	240.0
40. C24:1 (cis-15)	25.03	5.7	0.045	240.0
41. C22:6 (cis-4,7,10,13,16,19)	27.46	53.3	0.059	240.0